



20 Year
ANNIVERSARY



Naples Nantucket Yacht Group

850 Central Avenue #110, Naples, Florida 34102

239.331.6868 · bill@nnymg.com · nnymg.com

A TRADITION OF YACHTING EXCELLENCE

CHARTING SUCCESS

Luxury Yachting Redefined

Bill Charbonneau founded [Naples Nantucket Yacht Group](#) with a singular mission: to redefine luxury yachting. What began as a dream sketched on a napkin 20 years ago has evolved into a premier boutique yacht charter company renowned for curating extraordinary experiences on the azure waters of Southwest Florida and beyond. From a single 37-foot vessel to a prestigious fleet of exquisite yachts, Naples Nantucket Yacht Group proudly serves discerning clients worldwide, offering a comprehensive range of bespoke services, including charters, fractional partnerships, and yacht management.



Naples Nantucket Yacht Group

850 Central Avenue #110, Naples, Florida 34102
239.331.6868 · bill@nnymg.com · nnymg.com

A TRADITION OF YACHTING EXCELLENCE



CHARTERS

Discover the Pinnacle of Luxury Seafaring Elegance

Cruising Beyond Expectations

Experience the breathtaking beauty of chartering a yacht with [Naples Nantucket Yacht Group](#). A skilled captain and crew will navigate the waters, providing a unique perspective of the coastal scenery in luxury. Relax on the deck, sip your favorite beverage, create lasting memories, and enjoy the tranquility of the seas for a day, evening, or multi-day cruise on yachts ranging from 30' to 150' and beyond.

With a sizable fleet of yachts, we always have availability. Whether you desire a luxurious superyacht with all the watersports, a mid-size yacht with a few watersports, or our 35' Formula 350 CBR for a short, private getaway, we can coordinate every detail. Our watersports include Sea-Doo Sparks, SEABOB-Jets, inflatable paddleboards, AquaBanas inflatable chaises and lounges, kayaks, snorkel gear, assorted floats and more.

Cruise the waters of Southwest Florida, Naples, Nantucket, the Northeast United States, Mediterranean, Tampa and St. Petersburg, Sanibel and Captiva, Fort Lauderdale, the Florida Keys, The Bahamas, and the Caribbean on the most exquisite yachts with an attentive, professional crew. We handle every detail from ground transportation to menu development, floral arrangements, and photography; we coordinate your exceptional yachting experience for an afternoon, day, weekend, or longer.

Please call 239.331.6868 or email [Bill Charbonneau](#) for availability, reservations and rates.

THE FLEET
A Snapshot of Our Yachts



132' Northcoast



131' Sunseeker



114' Ocean Alexander



110' Horizon



102' Riva Corsaro Super



100' Hatteras



98' Ocean Alexander 30R



95' Princess



94' Lazzara



55' Princess



51' Schaefer



50' Azimut



85' Ocean Alexander



76' Sunseeker



73' Sunseeker



44' Aquila



35' Formula 350 CBR



35' Sea Ray SLX 350



33' Aquariva Super



31' Sea Ray SLX 310



28' Boston Whaler

Naples Nantucket Yacht Group provides bespoke luxury charters ranging from low-key and sublime to the truly extraordinary. From selecting the perfect yacht and planning the itinerary to the cuisine and activities, everything is carefully customized to exceed your expectations.

Please call 239.331.6868 or email [Bill Charbonneau](#) for availability, reservations and rates.

Fleet yachts subject to change.

Naples Nantucket Yacht Group is excited to announce
Bill Charbonneau has placed his sales license with



Together, they will focus on yacht sales and fractional partnerships
for those seeking joint ownership opportunities.

YACHTSCAPES

Elite Charter Program



Your Passport to Effortless Yachting






For our clients who charter multiple times a year on various yachts in different ports, Naples Nantucket Yacht Group created the [YACHTSCAPES Elite Charter Program™](#). For an annual fee as low as \$30,000 (Ensign Program Level), paid over nine (9) months, a YACHTSCAPER receives access to our entire yacht fleet (Florida, The Bahamas, and the Northeast) with discounts off standard charter rates as well as premium ground transportation rates, watersports, preferred reservation times, exclusive events, and much more! It's the most straightforward yacht membership club—no subscription fees, a minimal deposit, flexible payment terms, and access to a global fleet—established and operated by a team with a 20-year legacy of delivering exceptional service and satisfying elite clientele across over 4,000 charters.

With a fleet of yachts ranging from 30' to over 150', we always have availability for charter clients or YACHTSCAPERS.

Whether you desire a luxurious superyacht with all the watersports, a mid-size yacht with a few watersports, or our 35' Formula 350 CBR for a short, private getaway, we can coordinate every detail. Our watersports include Sea-Doo Sparks, SEABOB-Jets, inflatable paddleboards, AquaBanas inflatable chaises and lounges, kayaks, snorkel gear, assorted floats and more.

Cruise the waters of Southwest Florida, Naples, Nantucket, the Northeast United States, Mediterranean, Tampa and St. Petersburg, Sanibel and Captiva, Fort Lauderdale, the Florida Keys, The Bahamas, and the Caribbean on the most exquisite yachts with an attentive, professional crew. We handle every detail from ground transportation to menu development, floral arrangements, and photography; we coordinate your exceptional yachting experience for an afternoon, day, weekend, or longer.

Program Levels

Ensign		\$30,000 Annually 5% Discount
Lieutenant		\$60,000 Annually 7% Discount
Commander		\$80,000 Annually 15% Discount
Captain		\$100,000 Annually 20% Discount
Admiral (Corporate)		\$100,000 Annually 20% Discount

SAMPLE AGREEMENT (Lieutenant Program Level)

YACHTSCAPERS pay Naples Nantucket Yacht Group \$60,000 to join the YACHTSCAPES Elite Charter Program for one year—no long-term commitment.

PAYMENT TERMS

- A deposit of \$15,000 is due upon joining.
- Nine (9) additional payments of \$5,000 are due on the first of each month for a term of nine (9) months.
- Naples Nantucket Yacht Group issues a credit of \$64,200 into your YACHTSCAPES account, which can be applied to the cost of the following services: charters on any yachts in the fleet, premium ground transportation, and watersports rentals.

PROGRAM BENEFITS

- 7% off standard charter rates.
- 7% off standard premium ground transportation rates.
- 7% off watersports rentals.
- Complimentary three-hour sunset cruise on one of our yachts under 69'.

CONDITIONS

- YACHTSCAPER is responsible for all fuel charges, transient dockage, gratuities, taxes (over six passengers), food, beverages, and incidentals.
- Fleet selection may change without notice.
- Reservations are on a first-come-first-serve basis. If a yacht is unavailable due to maintenance or a schedule conflict, Naples Nantucket Yacht Group will provide an alternative.
- The dollar value of the boat/length of use will be deducted from your YACHTSCAPES account until fully depleted.
- If a YACHTSCAPER depletes their account before the agreement ends, a \$5,000 payment and assignment can be purchased to increase usage and maintain the same discount benefit.

- If a balance remains at the end of the agreement and the program is not renewed, the remaining balance can be used within the first three (3) months after the agreement expiration date.
- If a balance remains at the end of the agreement and the program is extended, the remaining balance will be added to the next-year dollar total.

CAPACITY

- Boats under 40'-6 Guests
- Boats under 50'-8 Guests
- Boats over 51'-12 Guests

Please call 239.860.6868 or email [Bill Charbonneau](#) to learn more.

FRACTIONAL PARTNERSHIPS

No Matter How You Slice It, It's the Sensible Way to Own

How It Works

EACH PARTNER'S SHARE
IS EQUIVALENT TO
PERCENTAGE OWNED.

#1. Equal amount
of capital
investment.

#2. Equal amount
of revenue generated
through charter.

#3. Equal amount
of overhead, repairs
and maintenance.

#4. Equal amount
of distribution at
time of sale.



Lifestyle at a Fraction of the Cost

The history behind fractional ownership is long. However, the concept started making sense in the late 1980s when [NetJets®](#) paved the way for the fractional ownership of jets.

Fractional ownership brings like-minded individuals together to purchase significant capital outlay assets, often with high maintenance expenses, time-consuming management responsibilities, and sometimes a high depreciation rate.

One of the biggest perks of fractional ownership is getting more asset for the money. For example, you can own a 131' Sunseeker for less than a quarter of the price (approximately \$4,159,000). It's easy to understand and appreciate the fractional ownership model.

When proper systems are in place, and expectations are set from the beginning, fractional ownership works nicely.

Now consider all the headaches of typical yacht ownership, such as hiring a captain and crew, paying port fees (except while traveling), handling taxes, cleaning and maintaining the yacht, and making sure that all the subcontractors you hire are doing their jobs and not just taking your money. Don't forget the high insurance premiums or minimal coverage requirements. With fractional ownership, you'll never have to deal with any of this again! And, with the luxury of today's technology, we can easily use the Internet to handle all aspects of asset management, including flexible scheduling.

After twenty years of pioneering fractional partnerships, delivering international charter experiences, and providing comprehensive management services, [Naples Nantucket Yacht Group](#) has partnered with seasoned yacht owners to unveil a selection of unparalleled opportunities. These innovative offerings provide all the benefits of ownership

at a fraction of the cost and then some. Our shared reputations and extensive experiences converge to craft these exclusive boutique luxury offerings tailored for a privileged and discerning clientele.

You will collectively benefit from the income generated through chartering periods when the yachts are not in use while ensuring professional crewing, management, and maintenance under the expert care of Naples Nantucket Yacht Group. Additionally, you can track your yacht, make bookings online, and access reservations.

Live the luxury yachting life with the freedom you've been dreaming of!

Please call 239.331.6868 or email [Bill Charbonneau](#) to request member documents and financial projections.

 *131' Sunseeker* Pages 22-25

 *100' Hatteras* Pages 26-29

 *98' Ocean Alexander 30R* Pages 30-33

 *76' Sunseeker* Pages 34-37

 *62' Princess S62* Pages 38-41

 *35' Formula 350 CBR* Pages 42-45

 *33' Aquariva Super* Pages 46-47



Dockage Dilemma: Why Fractional Ownership Makes Sense

Finding dockage in Naples is both a critical necessity and a significant challenge for boating enthusiasts. The area's popularity as a luxurious waterfront destination has led to an overwhelming demand for slips, with availability being nearly nonexistent. Owning a boat in Naples often comes with the daunting task of securing dockage, which can cost upwards of \$3 million—if you're fortunate enough to find one. This limited availability highlights yet another reason fractional partnership is the sensible way to own.

Please call 239.331.6868 or email [Bill Charbonneau](#) to request member documents and financial projections.





2019 131' Sunseeker

DIMENSIONS

- LOA: 131'5"/40.05 m
- Beam: 26'7"/8.09 m
- Draft: 9'4"/2.85 m
- Displacement: 417,996 lb/189,600 kg

ENGINE

- MTU: Up to 6,362 PS
- Maximum Speed: Up to 25 Knots
- Range at 12 Knots: Up to 1,600 NM
- Drives: Shafts
- Fuel: 5,925 gal/22,430 L
- Total Long Range Capacity (with optional tank): 7,050 gal/26,700 L

CAPACITIES

- Fresh Water: 1,307 gal/4,950 L
- Black Water: 383 gal/1,450 L
- Grey Water: 356 gal/1,350 L



PHOTO
GALLERY



VIRTUAL
TOUR



PRINT
BROCHURE

Perseverance 4 is a 2019 131-foot luxury superyacht crafted by Sunseeker International. It embodies elegance, performance, and impeccable design. This yacht's sleek exterior, characterized by clean lines and expansive windows, is visually stunning and built with high-quality materials like fiberglass and carbon fiber for durability. Inside, renowned designers have curated an opulent and spacious layout that includes a customizable main salon, state-of-the-art entertainment, and natural light from large windows.

The yacht accommodates up to 12 guests across six luxury cabins, including a full-beam primary suite. Outdoor areas such as the aft deck and flybridge are perfect for dining, lounging, and sunbathing, while advanced stabilization and navigation systems ensure an enjoyable ride. High-speed capabilities allow efficient travel between destinations. With added amenities like a gym, cinema room, and water toys, this yacht offers an extraordinary experience, blending sophistication and comfort.



- Cabins: 6
- Heads: 6
- Berths: 12

Perseverance 4

- Shares Available: 1
- Share Cost: \$4,159,000
- Ownership: 25%
- Usage Days Per Year: 40



Projected Profit and Loss **Perseverance 4, LLC** *Cash Basis*

	<i>Forecast</i> <u>2025</u>
Income	
Charters	\$1,500,000
Increment Charter Expenses	
Captain & Crew	
Captain-Charter Incremental	\$0
Crew-Charter Incremental	<u>\$0</u>
Total Captain & Crew-Charter Incremental	\$0
Transient Slip Rental	\$200,000
Yacht Fuel	\$250,000
Provisions	\$30,000
Administrative Expenses	\$40,000
Crew Meals	\$8,000
Dues & Subscriptions	\$5,000
Customs	\$3,000
Bank Charges	<u>\$400</u>
Total Charter Related Expense	\$556,400
Charter Income	<u>\$943,600</u>
Fixed Operating Costs	
Captain & Crew	
Captain-Base	\$130,000
Crew-Base	<u>\$375,000</u>
Total Captain & Crew-Base	\$505,000

Note: Individual owners are responsible for fuel used, provisioning, pro rata crew costs, and incremental costs related to their personal yacht use. Crew gratuity is at the discretion of the owner.

	<i>Forecast</i> <u>2025</u>
Dockage-Naples	
Slip Rental	\$170,000
Slip Utilities	\$25,000
Insurance	\$60,000
Cleaning-Interior & Exterior	\$70,000
Repairs & Maintenance	\$420,000
Legal & Accounting	\$15,000
Vessel Supplies	\$70,000
Uniforms	\$15,000
Office & Storage	\$15,000
Taxes & Licenses	\$70,000
Utilities	\$4,000
Yacht Management	<u>\$300,000</u>
Total Fixed Operating Expenses	<u>\$1,739,000</u>
Net Operating Income-Cash Basis	<u>(\$795,400)</u>
Finance Cost	
Interest	\$0
Principal	<u>\$0</u>
Net Income-Cash Basis	<u>(\$795,400)</u>
Annual Cash Cost (Contribution)/Partner	<u>(\$198,850)</u>
Tax Benefit	
Operating Loss	\$334,068
From Depreciation	<u>\$2,376,857</u>
	<u>\$2,710,925</u>
Annual (Cost)/Benefit of Ownership/Partner	<u>\$478,881</u>

Base Assumptions **Perseverance 4, LLC** *2019 131' Sunseeker*

Purchase Price	\$16,000,000
FL Sales/Transfer Tax	\$18,000
Finders Fees	\$600,000
Closing Costs	<u>\$20,000</u>
Total Acquisition Cost	<u>\$16,638,000</u>
Number of Owners (Partners)	4
Capital Contribution/Partner	\$4,159,000
Financing	
Amount	\$0
Interest Rate	5.00%
Amortization (Years)	20
Annual Payment	\$0
Tax Considerations	
Applicable Tax Rate	
Federal Income Tax	37.00%
State Income Tax	<u>5.00%</u>
	<u>42.00%</u>
Depreciation	
Useful Life (Years)	7
Method	Straight Line



2004 100' Hatteras

DIMENSIONS

- LOA: 100'0"/30.48 m
- Beam: 22'6"/6.86 m
- Draft: 6'6"/1.98 m
- Displacement: 100 GT

ENGINE

- Twin MTU 16V 2,000HP
- Maximum Speed: Up to 23 Knots
- Range at 12 Knots: Up to 2,000 NM
- Drives: Shafts
- Fuel: 5,125 gal/19,400 L

CAPACITIES

- | | |
|--------------------------------|-------------|
| • Fresh Water: 840 gal/3,179 L | • Cabins: 4 |
| • Black Water: 365 gal/1,381 L | • Heads: 5 |
| • Grey Water: 200 gal/757 L | • Crew: 4 |



PHOTO
GALLERY



VIRTUAL
TOUR



PRINT
BROCHURE

Magnum Ride is a luxurious 100-foot Hatteras Flybridge, initially built in 2004 and extensively refitted in 2021-2022. It has a completely new interior, advanced Garmin electronics, and significant engine upgrades. The vessel promises an extraordinary experience, combining unmatched craftsmanship and adventure.

With sleek lines and a lavish interior, it comfortably accommodates up to eight guests in spacious staterooms featuring plush bedding, en-suite bathrooms, and top-notch systems. Ideal for both tranquil escapes and lively gatherings, the yacht offers multiple entertainment spaces, including a grand salon, expansive sundeck, and swim platform. Guests can enjoy gourmet meals an optional private chef prepares for a truly indulgent experience. Equipped with cutting-edge navigational technology, *Magnum Ride* ensures a seamless and safe journey, exploring the Gulf of Mexico, The Bahamas, and Northeast US in the summer months. Each cruise promises an unparalleled escape, blending luxury with adventure on the open sea.



Magnum Ride/Option #1

- Shares Available: 2
- Share Cost: \$1,300,000
- Ownership: 33%
- Usage Days Per Year: 40

Magnum Ride/Option #2

- Shares Available: 1
- Share Cost: \$1,928,000
- Ownership: 50%
- Usage Days Per Year: 40



Projected Profit and Loss/Option #2 Magnum Ride, LLC Cash Basis

	Forecast 2025		Forecast 2025
Income		Dockage-Naples	
Charters	\$400,000	Slip Rental	\$60,000
Increment Charter Expenses		Slip Utilities	\$6,000
Captain & Crew		Insurance	\$85,000
Captain-Charter Incremental		Cleaning-Interior & Exterior	\$40,000
Crew-Charter Incremental	\$100,000	Repairs & Maintenance	\$120,000
Total Captain & Crew-Charter Incremental	\$100,000	Legal & Accounting	\$10,000
Transient Slip Rental	\$60,000	Vessel Supplies	\$12,000
Yacht Fuel	\$30,000	Uniforms	\$3,000
Provisions	\$15,000	Office & Storage	\$0
Administrative Expenses	\$10,000	Taxes & Licenses	\$35,000
Crew Meals	\$2,000	Utilities	\$0
Dues & Subscriptions	\$7,000	Yacht Management	\$60,000
Customs	\$0	Total Fixed Operating Expenses	\$551,000
Bank Charges	\$4,000	Net Operating Income-Cash Basis	(\$379,000)
Total Charter Related Expense	\$228,000	Finance Cost	
Charter Income	\$172,000	Interest	\$0
Fixed Operating Costs		Principal	\$0
Captain & Crew		Net Income-Cash Basis	(\$379,000)
Captain-Base	\$120,000	Annual Cash Cost (Contribution)/Partner	(\$189,500)
Crew-Base	\$0		
Total Captain & Crew-Base	\$120,000	Tax Benefit	
		Operating Loss	\$159,180
		From Depreciation	\$550,857
			<u>\$710,037</u>
		Annual (Cost)/Benefit of Ownership/Partner	\$165,519

Note: Individual owners are responsible for fuel used, provisioning, pro rata crew costs, and incremental costs related to their personal yacht use. Crew gratuity is at the discretion of the owner.

Base Assumptions/Option #2 Magnum Ride, LLC 2004 100' Hatteras Flybridge

Purchase Price	\$3,800,000
FL Sales/Transfer Tax	\$18,000
Finders Fees	\$30,000
Closing Costs	\$8,000
Total Acquisition Cost	\$3,856,000
Number of Owners (Partners)	2
Capital Contribution/Partner	\$1,928,000
Financing	
Amount	\$0
Interest Rate	5.00%
Amortization (Years)	20
Annual Payment	\$0
Tax Considerations	
Applicable Tax Rate	
Federal Income Tax	37.00%
State Income Tax	5.00%
	<u>42.00%</u>
Depreciation	
Useful Life (Years)	7
Method	Straight Line



2024 98' Ocean Alexander 30R

DIMENSIONS

- LOA: 97'3"/29.65 m
- Waterline Length: 88'11"/27.1 m
- Beam: 21'11"/27.1 m
- Draft: 6'6"/1.98 m
- Displacement: 266,539 lb/120,900 kg

ENGINE

- Twin MAN 12V 2,000HP
- Maximum Speed: Up to 25 Knots
- Range at 12 Knots: Up to 1,600 NM
- Drives: Shafts
- Fuel: 3,600 gal/13,627 L

CAPACITIES

- Fresh Water: 450 gal/1,704 L
- Holding Tank: 200 gal/757 L



PHOTO
GALLERY



VIRTUAL
TOUR



PRINT
BROCHURE

Those passionate about the water understand there's no place as invigorating as the open sea. For the first time, the best in engineering, craftsmanship, and design seamlessly merge into a vessel that will define the future of luxury yachts for years to come—the 2024 98-foot Ocean Alexander 30R. Crafted by world-renowned designer Evan K. Marshall and Arrabito Naval Architects and perfected by their expert engineers, *Just A Vacation* is the revolutionary embodiment of style and performance.

Sleek design. Luxurious spaces. Powerful engines. Unwavering safety. Breathtaking views. They transformed everything without sacrificing anything. The full-width main deck expands living space without compromising the incredible performance and efficiency OA is known for. Picture going from the spacious on-deck primary suite to grab a martini from the new wet bar island in the salon. You take a deep breath, marveling at the nearly 360° view of the sunset coming through the massive floor-to-ceiling windows. Then, sit back and gaze at the stars over the endless sea.



- Cabins: 6
- Heads: 6
- Berths: 12

Just A Vacation

- Shares Available: 1
- Share Cost: \$8,324,000
- Ownership: 50%
- Usage Days Per Year: 40



Projected Profit and Loss
Just A Vacation, LLC
Cash Basis

	Forecast 2025		Forecast 2025
Income		Dockage-Naples	
Charters-70 days \$12,000 net to boat	\$840,000	Slip Rental	\$120,000
Increment Charter Expenses		Slip Utilities	\$14,000
Captain & Crew		Insurance	\$100,000
Captain-Charter Incremental	\$0	Cleaning-Interior & Exterior	\$36,000
Crew-Charter Incremental	\$0	Repairs & Maintenance	\$200,000
Total Captain & Crew-Charter Incremental	\$0	Legal & Accounting	\$10,000
Transient Slip Rental	\$160,000	Vessel Supplies	\$20,000
Yacht Fuel	\$100,000	Uniforms, Advertising & Marketing	\$50,000
Provisions	\$42,000	Office & Storage	\$6,000
Administrative Expenses	\$30,000	Taxes & Licenses	\$47,000
Crew Meals	\$12,000	Utilities	\$2,000
Dues & Subscriptions	\$6,000	Yacht Management	\$120,000
Customs	\$2,000	Total Fixed Operating Expenses	\$1,115,000
Bank Charges	\$28,000	Net Operating Income-Cash Basis	(\$695,000)
Total Charter Related Expense	\$380,000	Finance Cost	
Charter Income	\$460,000	Interest	\$0
Fixed Operating Costs		Principal	\$0
Captain & Crew		Net Income-Cash Basis	(\$695,000)
Captain-Base	\$150,000	Annual Cash Cost (Contribution)/Partner	(\$347,500)
Crew-Base	\$280,000		
Total Captain & Crew-Base	\$430,000	Tax Benefit	
		Operating Loss	\$291,900
		From Depreciation	\$2,378,286
			<u>\$2,670,186</u>
		Annual (Cost)/Benefit of Ownership/Partner	<u>\$987,593</u>

Note: Individual owners are responsible for fuel used, provisioning, pro rata crew costs, and incremental costs related to their personal yacht use. Crew gratuity is at the discretion of the owner.

Base Assumptions
Just A Vacation, LLC
2024 98' Ocean Alexander 30R

Purchase Price	\$16,200,000
FL Sales/Transfer Tax	\$18,000
Finders Fees	\$400,000
Closing Costs	\$30,000
Total Acquisition Cost	\$16,648,000
Number of Owners (Partners)	2
Capital Contribution/Partner	\$8,324,000
Financing	
Amount	\$0
Interest Rate	5.00%
Amortization (Years)	20
Annual Payment	\$0
Tax Considerations	
Applicable Tax Rate	
Federal Income Tax	37.00%
State Income Tax	5.00%
	<u>42.00%</u>
Depreciation	
Useful Life (Years)	7
Method	Straight Line



2019 76' Sunseeker

DIMENSIONS

- LOA: 77'5"/23.60 m
- Beam: 19'5"/5.92 m
- Draft: 5'6"/1.68 m
- Displacement: 118,140 lb/53,587 kg

ENGINE

- Twin MAN 12V (2x1550PS)
- Maximum Speed: Up to 32 Knots
- Range at 12 Knots: Up to 600 NM
- Drives: Shafts
- Fuel: 1,585 gal/5,999 L

CAPACITIES

- Fresh Water: 370 gal/1,400 L
- Holding Tank: 106 gal/401 L



PHOTO
GALLERY



VIRTUAL
TOUR

The Sunseeker 76 is the epitome of luxury, performance, and style. It's a masterpiece that combines state-of-the-art engineering with exquisite design and sets a new benchmark in the realm of luxury yachting. Powered by efficient engines, *Tempus Fugit* delivers an exhilarating cruising experience, gliding gracefully through the waves, offering a smooth and stable ride and promising an unforgettable voyage.

It offers a spacious interior, providing ample room for relaxation. The tastefully furnished salon has panoramic views of the sea, while the primary suite is a true sanctuary, complete with a plush king-sized bed, lavish ensuite, and large windows. The additional guest cabins are equally impressive. On the main deck, there's a fully equipped galley where a chef can create culinary delights. The flybridge is a versatile space that can be tailored to your needs. Whether you prefer to bask in the sun or host a lively gathering in the evening, this area, complete with a wet bar, barbecue, and ample seating, is the perfect spot for any occasion.



- Cabins: 4
- Heads: 4
- Capacity: 12

Tempus Fugit

- Shares Available: 1
- Share Cost: \$950,000
- Ownership: 20%
- Usage Days Per Year: 20



Please call 239.331.6868 or email [Bill Charbonneau](#) to request member documents and financial projections.

All financials are forecasts and speculative projections for presentation purposes only. Financial projections within this brochure are not accurate, nor should they be relied on to base a decision on whether to purchase a share of any yacht. This presentation makes no representations of their accuracy. Actual yachts may vary, and prices and availability are subject to change.



2022 62' Princess S62

DIMENSIONS

- LOA: 62'11"/19.17 m
- Beam: 16'0"/4.87 m
- Draft: 4'9"/1.46 m
- Displacement: 63,405 lb/28,760 kg

ENGINE

- Twin MAN V8-1200 (2x1,200 MHP)
- Maximum Speed: 38 Knots
- Drives: Shafts
- Fuel: 858 gal/3,250 L

CAPACITIES

- Fresh Water: 159 gal/603 L
- Holding Tank: 55 gal/250 L



The new Princess S62 yacht combines power and elegance, boasting a sleek exterior with an optimized hull and twin MAN V8-1200 engines, reaching up to 38 knots.

Custom-ordered and delivered in March 2023, *Base Camp* presents as nearly new and comes loaded with top-tier features, and full engine and generator service completed in May 2024. The yacht's highlights include a spacious three-stateroom, two-head layout, luxury touches like the Allure package, an electric swim platform, a tender garage, an electronically controlled Bimini top, a sunroof, and a cockpit sun awning. Its advanced Garmin electronics, radar, Seakeeper NG9 stabilizer, and third control station in the cockpit enhance performance and safety. Perfect for both high-speed cruising and tranquil anchoring, it features an electro-hydraulic platform for easy access to a 3.4-meter tender or jet-ski.

Base Camp delivers both thrilling speed and luxurious amenities for a top-notch yachting experience.



- Cabins: 3
- Heads: 2
- Berths: 12

Base Camp

- Shares Available: 1
- Share Cost: \$1,028,000
- Ownership: 50%
- Usage Days Per Year: 40



Projected Profit and Loss *Base Camp, LLC* Cash Basis

	Forecast 2025		Forecast 2025
Income		Dockage-Naples	
Charters	\$150,000	Slip Rental	\$48,000
Increment Charter Expenses		Slip Utilities	\$4,000
Captain & Crew		Insurance	\$50,000
Captain-Charter Incremental	\$20,000	Cleaning-Interior & Exterior	\$25,000
Crew-Charter Incremental	\$11,000	Repairs & Maintenance	\$60,000
Total Captain & Crew-Charter Incremental	\$31,000	Legal & Accounting	\$6,000
Transient Slip Rental	\$6,000	Vessel Supplies	\$7,000
Yacht Fuel	\$10,000	Uniforms	\$2,000
Provisions	\$5,000	Office & Storage	\$0
Administrative Expenses	\$3,000	Taxes & Licenses	\$20,000
Crew Meals	\$1,000	Utilities	\$0
Dues & Subscriptions	\$5,000	Yacht Management	\$48,000
Customs	\$0	Total Fixed Operating Expenses	\$270,000
Bank Charges	\$4,000	Net Operating Income-Cash Basis	(\$185,000)
Total Charter Related Expense	\$65,000	Finance Cost	
Charter Income	\$85,000	Interest	\$0
Fixed Operating Costs		Principal	\$0
Captain & Crew		Net Income-Cash Basis	(\$185,000)
Captain-Base	\$0	Annual Cash Cost (Contribution)/Partner	(\$92,500)
Crew-Base	\$0		
Total Captain & Crew-Base	\$0	Tax Benefit	
		Operating Loss	\$77,700
		From Depreciation	\$293,714
			<u>\$371,414</u>
		Annual (Cost)/Benefit of Ownership/Partner	\$93,207

Note: Individual owners are responsible for fuel used, provisioning, pro rata crew costs, and incremental costs related to their personal yacht use. Crew gratuity is at the discretion of the owner.

Base Assumptions *Base Camp, LLC* 2022 62' Princess S62

Purchase Price	\$2,000,000
FL Sales/Transfer Tax	\$18,000
Finders Fees	\$30,000
Closing Costs	\$8,000
Total Acquisition Cost	\$2,056,000
Number of Owners (Partners)	2
Capital Contribution/Partner	\$1,028,000
Financing	
Amount	\$0
Interest Rate	5.00%
Amortization (Years)	20
Annual Payment	\$0
Tax Considerations	
Applicable Tax Rate	
Federal Income Tax	37.00%
State Income Tax	5.00%
	<u>42.00%</u>
Depreciation	
Useful Life (Years)	7
Method	Straight Line



2022 35' Formula 350 CBR

DIMENSIONS

- LOA: 35'0"/10.67 m
- Beam: 10'9"/3.28 m
- Draft: 3'3"/.99 m
- Displacement: 15,507 lb/7,033 kg

ENGINE

- Triple Mercury 350 HP
- Maximum Speed: 60 mph
- Range at 12 Knots: Up to 300 NM
- Drives: Outboard
- Fuel: 252 gal/953 L

CAPACITIES

- Fresh Water: 29 gal/109 L
- Black Water: 3 gal/11 L



PHOTO
GALLERY



VIRTUAL
TOUR

The 2022 Formula 350 Crossover Bowrider is a luxury 35-foot yacht crafted for those seeking a spacious, powerful, and versatile vessel. Known for their quality, Formula Boats designed this model to comfortably accommodate up to eight passengers, blending performance and style seamlessly. Powered by twin 8.2L MAG high-output engines with Bravo Three X drives, *Joint Venture* provides exhilarating speed and smooth handling, ideal for both leisurely cruises and water sports. Its deep-V hull ensures stability even in rough waters.

The yacht's interior features a spacious bow seating area, a plush cockpit, and a convertible aft lounge that doubles as a sun pad. Below deck, a cozy cabin includes a U-shaped dinette, compact galley, and private head, perfect for overnight stays. The package includes high-end technology and materials, including advanced navigation and entertainment systems. This model is an excellent choice for boating enthusiasts who value luxury, performance, and versatility in one elegant design.



- Cabins: 1
- Crew: 2
- Capacity: 8

Joint Venture

- Shares Available: 1
- Share Cost: \$250,000
- Ownership: 50%
- Usage Days Per Year: 40



Projected Profit and Loss Joint Venture, LLC Cash Basis

	Forecast 2025		Forecast 2025
Income		Dockage-Naples	
Charters	\$35,000	Slip Rental	\$0
Increment Charter Expenses		Slip Utilities	\$0
Captain & Crew		Insurance	\$20,000
Captain-Charter Incremental	\$0	Cleaning-Interior & Exterior	\$5,000
Crew-Charter Incremental	\$0	Repairs & Maintenance	\$8,000
Total Captain & Crew-Charter Incremental	\$0	Legal & Accounting	\$2,000
Transient Slip Rental	\$0	Vessel Supplies	\$2,000
Yacht Fuel	\$1,000	Uniforms	\$0
Provisions	\$0	Office & Storage	\$0
Administrative Expenses	\$0	Taxes & Licenses	\$500
Crew Meals	\$0	Utilities	\$0
Dues & Subscriptions	\$400	Yacht Management	\$12,000
Customs	\$0	Total Fixed Operating Expenses	\$49,500
Bank Charges	\$2,000	Net Operating Income-Cash Basis	(\$17,900)
Total Charter Related Expense	\$3,400	Finance Cost	
Charter Income	\$31,600	Interest	\$22,500
Fixed Operating Costs		Principal	\$13,609
Captain & Crew		Net Income-Cash Basis	(\$54,009)
Captain-Base	\$0	Annual Cash Cost (Contribution)/Partner	(\$27,005)
Crew-Base	\$0		
Total Captain & Crew-Base	\$0	Tax Benefit	
		Operating Loss	\$16,968
		From Depreciation	\$74,714
			<u>\$91,682</u>
		Annual (Cost)/Benefit of Ownership/Partner	\$18,837

Note: Individual owners are responsible for fuel used, provisioning, pro rata crew costs, and incremental costs related to their personal yacht use. Crew gratuity is at the discretion of the owner.

Base Assumptions Joint Venture, LLC 2022 35' Formula 350 Crossover Bowrider

Purchase Price	\$500,000
FL Sales/Transfer Tax	\$0
Finders Fees	\$20,000
Closing Costs	\$3,000
Total Acquisition Cost	\$523,000
Number of Owners (Partners)	2
Capital Contribution/Partner	\$250,000
Financing	
Amount	\$450,000
Interest Rate	5.00%
Amortization (Years)	20
Annual Payment	(\$36,109)
Tax Considerations	
Applicable Tax Rate	
Federal Income Tax	37.00%
State Income Tax	5.00%
	<u>42.00%</u>
Depreciation	
Useful Life (Years)	7
Method	Straight Line



2015 33' Aquariva Super

DIMENSIONS

- LOA: 33'0"/10.06 m
- Beam: 9'2"/2.79 m
- Draft: 3'2"/0.97 m
- Displacement: 14,550 lb/6,599 kg

ENGINE

- Twin Yanmar 8LV-370
- Maximum Speed: Up to 41.5 Knots
- Range: Up to 155 NM
- Drives: Shafts
- Fuel: 127 gal/480 L

CAPACITIES

- Fresh Water: 34 gal/128 L
- Black Water: 3 gal/11 L



PHOTO
GALLERY



VIRTUAL
TOUR

The 33-foot 2015 Aquariva Super is a luxurious yacht that carries on the legacy of the iconic Aquarama, blending classic allure with contemporary innovation. *Amore* exudes elegance with its sleek lines and sophisticated design, inspired by the glamorous Riva runabouts of the 1960s. Ideal for intimate coastal cruises or leisurely tours around Naples, it combines compact size with grand appeal, featuring a spacious cockpit, ample seating, and a convertible sun pad for relaxation.

Powered by twin Yanmar engines, the Aquariva glides smoothly across the water, delivering an exhilarating ride. Every detail, from its iconic double-curved windshield to its refined aft deck, reflects Riva's commitment to timeless craftsmanship and style. High-quality fittings provide a luxurious onboard experience, while cutting-edge amenities enhance comfort and functionality. With its blend of nostalgia and modernity, the Aquariva Super offers a uniquely elegant cruise, making it a standout choice for those seeking performance and style on the water.



Member documents and financial projections provided upon request.

- Cabins: 1
- Crew: 1
- Capacity: 8

Amore

- Shares Available: 2
- Share Cost: \$350,000
- Ownership: 40%
- Usage Days Per Year: 28

YACHT MANAGEMENT

Tailored Services for Discerning Owners

Our Services

[NNYMG, LLC](#) provides a comprehensive suite of management services designed to oversee every aspect of yacht operations expertly. Our approach is bespoke, tailoring support and solutions to meet the unique needs of each owner. From meticulous financial reporting to the seamless coordination of maintenance and yard periods, our experienced team delivers unparalleled expertise and precision. Rigorous operational and financial oversight ensures peace of mind, guaranteeing that your yacht operates safely, efficiently, and excellently.

Our Approach

The complexities of yacht ownership demand sophisticated management. Our elite team offers expert guidance and strategic support to yacht owners and captains, ensuring your vessel is maintained, operated, and administered to the highest standards. With a focus on proactive management and attention to detail, we simplify the intricacies of ownership, allowing you to enjoy the pleasures of your yacht fully.

Why Us?

Choosing NNYMG, LLC means entrusting your yacht to a team of dedicated professionals who serve as your advocate across all facets of operation. From navigating evolving technical requirements to ensuring compliance with the latest administrative and regulatory standards, we provide unmatched expertise and efficiency. Rest assured, our commitment to safety, precision, and excellence ensures that your yacht is managed seamlessly, allowing you to focus on what matters most—enjoying your yachting lifestyle.

Please call 239.860.6868 or email [Bill Charbonneau](#) to learn more.

OUR CREW
Leadership Team

WILLIAM CHARBONNEAU

Founder, Principal

Email [Bill](#)
239.331.6868



JACQUELINE CHARBONNEAU

Director of Operations, Principal

Email [Jacquie](#)
239.860.6868



WILLIAM HARGER

*Chief Captain,
Director of Field Operations*



ASHLEY HARGER

Executive Director of Crew



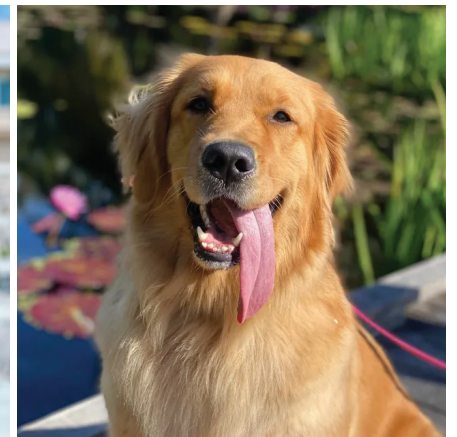
CHEYENNE JENKS

*Director of Sales,
Charter Coordinator*



DANNA MOLINA-KAISER

Office Manager



CHATHAM CHARBONNEAU

*Director of Provision Logistics,
Director of Emotional Support*



Naples Nantucket Yacht Group

850 Central Avenue #110, Naples, Florida 34102

239.331.6868 · bill@nnymg.com · nnymg.com

A TRADITION OF YACHTING EXCELLENCE